



Pasin bilong go onlain na konek wantaim ol narapela manmeri em i ken mekim yu amamas na i gat ol gutpela bilong em. Tasol em i impoten long save olsem i no olgeta lain we yu konek wantaim onlain em ol i tru tru dispela man o meri we ol i tok long en. Ol scammer i kleva tru na ol i ken traim kainkain manmeri, na ol i ken traim na trikim yu o sampela lain we yu save long en long kisim mani o pesinel infomesen. Em impoten long lainim hau long luksave na abrusim ol scammer.

Ol sampela scam we i save kamap planti taim

Ol scam i ken kamap long kainkain we, ol ken kamap long ol imeil, sosol midia, fon kol, teks mesej na leta o ol narapela dokumen. Ol sampela scam we i save kamap planti taim em:

- o **Ol scammer bilong prais o promosen** i ken tok olsem yu bin winim wanpela prais o loto na bai askim yu long serim pesinel infomesen bilong yu long kisim dispela prais – tasol tru tru, i no gat prais i stap.
- o **Ol scammer bilong giaman na prenim yu** em ol i ken mekim yu i pilim nais na tokim yu olsem yu luk 'nais' o 'intresting', o tokim yu olsem ol i gat planti mani na kago. Ol i ken traim na kamap prenim bilong yu, na bihain ol bai giamanim yu long givim mani long ol, o serim pesinel infomesen o praivet foto bilong yu.
- o **Ol scammer bilong helpim ol narapela lain em ol i** ken giaman olsem ol i wanpela oganaisesen o wanpela man o meri we i wok long kolektim mani na ol narapela samting long helpim wanpela man o meri o lain we i gat nid. Tasol i luk olsem ol i wok long traim long kisim mani bilong ol yet.
- o **Wok, dinau mani, investmen na kriptokarensi scammer** em ol lain we i ken givim yu gutpela wok, gutpela dinau mani o narapela we bilong mekim mani hariap na ol i ken askim long peimen long yu long kisim dispela ol samting, tasol tru tru ol dispela samting i no stap.
- o **Phishing** em taim wanpela scammer i trikim ol manmeri na priten olsem em i wanpela tru tru stoa, benk o oganaisesen, na mekim ol manmeri i serim ol pesinel infomesen bilong ol kain olsem nem, adres, benk ditel o onlain paswod. Ol i ken yusim dispela infomesen long priten olsem yu, na giamanim ol narapela lain long kisim mani o infomesen bilong ol.

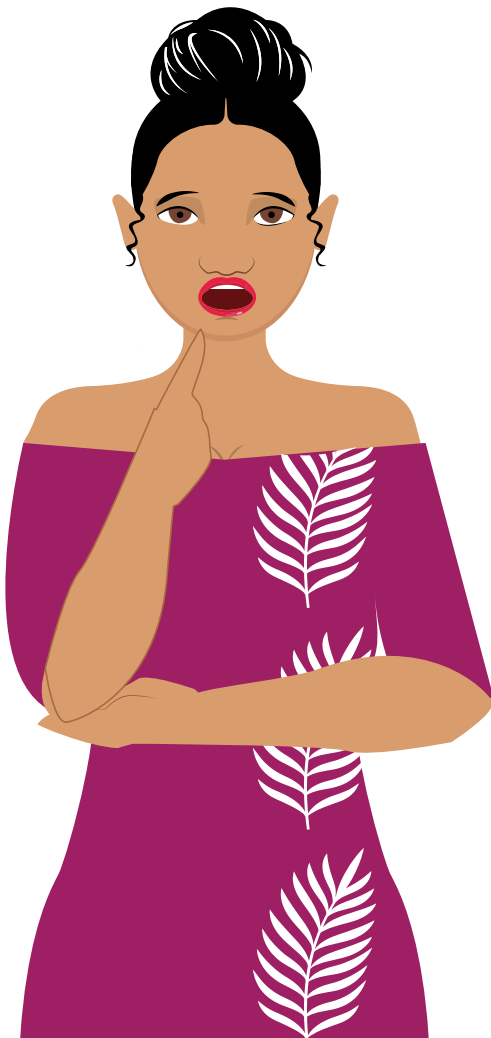
Sampela taim ol scammer i ken kamapim ol giaman mesej long luk olsem ol i kam long Facebook. Facebook bai no inap askim yu long paswod bilong yu insait long wanpela imeil, o salim wanpela paswod i kam long yu olsem wanpela atetsmen insait long imeil. Lainim moa [long hia](#).

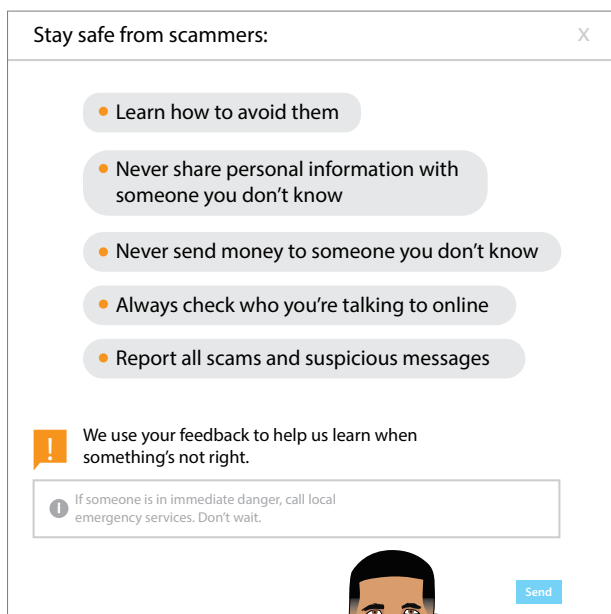
Hau long luksave long wanpela scam

Yu mas lukaut long ol dispela samting – dispela em ol sain we i soim olsem dispela em i scam:

- o Wanpela mesej we i askim yu long konfemim pesinel infomesen bilong yu, kain olsem nem bilong yu, adres bilong yu, deit yu bon long en o benk akaun infomesen bilong yu.
- o Wanpela tok save i tok olsem i gat problem long benk akaun bilong yu o peimen infomesen bilong yu.
- o Wanpela man o meri i askim yu long baim wanpela fi.
- o Ol mesej we i laik pretim yu o tokim yu long mekim wanpela samting hariap.
- o Ol mesej we i gat mistek long spelling na grama bilong ol.

Tingim – sapos wanpela samting i saun gutpela tumas...orait, i luk olsem dispela samting em i no tru.





Hau long abrusim ol scam

- o Sapos yu no pilim gut long wanpela mesej we yu bin kisim, no ken openim, na no ken bekim mesej bilong dispela man o meri.
- o Yu mas was gut sapos yu kisim mesej long wanpela man o meri we yu no save long en.
- o Noken givim mani o serim - ol pesinel infomesen bilong yu o bilong narapela - wantaim wanpela man o meri we yu no save long en. Pesinel infomesen em i toktok long kain samting olsem nem, krismas, fon namba, imeil o adres, skul, foto aidi (kain olsem wanpela paspot o laisens bilong draiva)
- o Ol i ken priten olsem ol i wanpela man o meri we yu save long en, kain olsem wanpela pren o famili memba. Sapos yu saspek olsem dispela samting i wok long kamap, yu ken kontektim dispela man o meri long narapela we long lukim olsem tru tru ol i dispela man o meri we yu wok long toktok long en, eksampel, yusim fon namba we yu save olsem tru tru dispela em i fon namba bilong ol.
- o Olgeta taim yu mas risets na painimaut long husat man o meri yu wok long toktok wantaim - lukim websait bilong oganaisesen bilong ol o ringim ol fon namba bilong konfemim olsem tru tru ol i dispela lain.

Ripotim olgeta scam o mesej we i lukim olsem scam hariap tru. Painimaut long pasin bilong ripotim ol scam long [Facebook and Messenger](#), [Instagram](#) na [WhatsApp](#).

Sapos yu ting olsem scam pasin i bin kamap long yu

- o Sapos yu bin givim wanpela scammer onlain akaun infomesen bilong yu (login, paswod na kain olsem), sensim paswod bilong yu hariap. Kamapim nupela paswod we i strong na i narakain.
- o Sapos yu yusim seim paswod long kankain akaun o websait, senisim olgeta.
- o Sapos yu bin yusim wanpela kredit o debit kad long baim wanpela scammer, kontektim benk o kredit kad kampani hariap na tok save long ol. Ritpotim scam na askim long wanem ol samting yu ken mekim long rivesim ol sas we i ken kamap long yu.

Sapos yu o wanpela man o meri yu save long en i wok long bungim hevi bilong scam na i stap insait long birua, kontektim lokel atoriti o polis long helpim yu.

Long moa infomesen, lukim infomesen pepa bilong Netsafe New Zealand long [Tips to Avoid Scams](#).